



EZB-AA/AAL Series Guide Rail

How to Order?

EZB -- 35 -- A -- A -- L -- T -- MM -- 2 -- 2 x 7000 -- (2) -- 4

Guide rail dimension Guide rail width Slider width Slider fix type Slider length Special requirement Seal type Slider Number Guide rail length Precision level

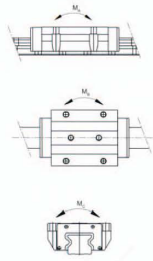
25-125mm A:Thread type
B:Lock type Blank:No special requirement
T: Special requirement MM,MN, MX,MY, MZ seals for choose Guide rail Number Number of stages for Guide rail

Blank:Standard type
L:Lengthen type

New



EZB-AA/AAL



Specifications

Model	Rated dynamic load		Rated static load		Rated torque			Slider weight kg	Guide rail weight kg/m
	C (KN)	C ₀ (KN)	M _A (N.m)	M _B (N.m)	M _C (N.m)	kg	kg/m		
EZB25AA	26.5	50.8	570	570	710	0.6	3.2		
EZB25AAL	33.8	71.6	830	830	980	0.8			
EZB35AA	50.5	121	1548	1548	2343	1.8	5.9		
EZB35AAL	61	162	2708	2708	3283	2.0			
EZB45AA	84.5	191	3156	3156	4858	2.5	9.8		
EZB45AAL	99.6	236	5560	5560	6736	3.5			
EZB55AA	123	292	5267	5267	8243	4.3	13.3		
EZB55AAL	154	390	9713	9713	11927	5.9			
EZB65AA	192	451	10823	10823	17762	8.6	20.3		
EZB65AAL	248	613	20808	20808	22957	12.3			
EZB85AA	460	1050	45600	45600	51420	21.6	35.2		
EZB1005AAL	547	1330	61200	61200	73140	31.5	46.8		
EZB125AAL	1040	1924	123176	123176	114438	65.5	84.6		

EGB-AB/ABL Series Guide Rail

How to Order?

EGB -- 25 -- A -- A -- L -- T -- MM -- 2 -- 2 x 7000 -- (2) -- 4

Guide rail dimension Guide rail width Slider width Slider fix type Slider length Special requirement Seal type Slider Number Guide rail length Precision level

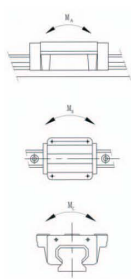
16-85mm A:Thread type
B:Lock type Blank:No special requirement
T: Special requirement MM,MN, MX,MY, MZ seals for choose Guide rail Number Number of stages for Guide rail

Blank:Standard type
L:Lengthen type

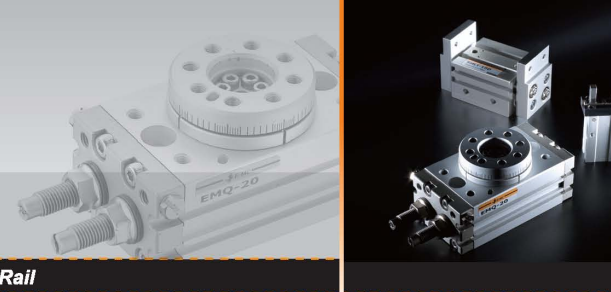
New



EGB-AB/ABL



Model	Rated dynamic load		Rated static load		Rated torque			Slider weight kg	Guide rail weight kg/m
	C (KN)	C ₀ (KN)	M _A (N.m)	M _B (N.m)	M _C (N.m)	kg	kg/m		
E16AB	8.51	13.38	70	70	100	0.17	1.62		
E20AB	13.70	19.27	160	160	230	0.33	2.3		
E20ABL	18.43	26.50	260	260	310	0.45			
E25 I AB	20.19	29.98	260	260	390	0.55			
E25 I ABL	27.17	40.68	450	450	500	0.75	3.3		
E25 II AB	20.19	29.98	260	260	390	0.5			
E25 II ABL	27.17	40.68	450	450	500	0.7			
E30AB	28.08	46.33	430	430	650	1	4.7		
E30ABL	37.77	61.77	720	720	870	1.3			
E35AB	34.97	58.53	610	610	1030	1.45	6.5		
E35ABL	46.43	76.54	1030	1030	1380	1.9			
E45 I AB	60.14	94.57	1290	1290	2100	2.6			
E45 I ABL	80.83	126.09	2080	2080	2790	3.4	11.2		
E45 II AB	60.14	94.57	1290	1290	2100	2.4			
E45 II ABL	80.83	126.09	2080	2080	2790	3.1			
E55AB	92.62	137.57	2180	2180	3640	4.3	15		
E55ABL	26.51	187.60	3650	3650	4860	5.8			
E65AB	154.13	221.89	4170	4170	6800	7.3	22.2		
E65ABL	220.24	322.75	7300	7300	9100	10.7			
E85AB	247.88	346.70	10400	10400	12900	16.5	35.5		
E85ABL	351.45	441.26	12800	12800	17200	22.2			



EGB-AA/AAL Series Guide Rail

How to Order?

EGB -- 25 -- A -- A -- L -- T -- MM -- 2 -- 2 x 7000 -- (2) -- 4

Guide rail dimension Guide rail width Slider width Slider fix type Slider length Special requirement Seal type Slider Number Guide rail length Precision level

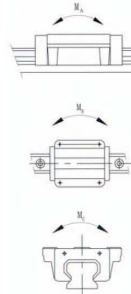
16-85mm A:Thread type
B:Lock type Blank:No special requirement
T: Special requirement MM,MN, MX,MY, MZ seals for choose Guide rail Number Number of stages for Guide rail

Blank:Standard type
L:Lengthen type

New



EGB-AA/AAL



Model	Rated dynamic load		Rated static load		Rated torque			Weight	
	C (KN)	C ₀ (KN)	M _A (N.m)	M _B (N.m)	M _C (N.m)	Slider/Pc	Guide rail/M		
E16AA	8.51	13.38	70	70	100	0.17	1.62		
E20AA	13.70	19.27	160	160	230	0.33	2.3		
E20AAL	18.43	26.50	260	260	310	0.45			
E25 I AA	20.19	29.98	260	260	390	0.55			
E25 I AAL	27.17	40.68	450	450	500	0.75	3.3		
E25 II AA	20.19	29.98	260	260	390	0.5			
E25 II AAL	27.17	40.68	450	450	500	0.7			
E30AA	28.08	46.33	430	430	650	1	4.7		
E30AAL	37.77	61.77	720	720	870	1.3			
E35AA	34.97	58.53	610	610	1030	1.45	6.5		
E35AAL	46.43	76.54	1030	1030	1380	1.9			
E45 I AA	60.14	94.57	1290	1290	2100	2.6			
E45 I AAL	80.83	126.09	2080	2080	2790	3.4	11.2		
E45 II AA	60.14	94.57	1290	1290	2100	2.4			
E45 II AAL	80.83	126.09	2080	2080	2790	3.1			
E55AA	92.62	137.57	2180	2180	3640	4.3	15		
E55AAL	126.51	187.60	3650	3650	4860	5.8			
E65AA	154.13	221.89	4170	4170	6800	7.3	22.2		
E65AAL	220.24	322.75	7300	7300	9100	10.7			
E85AA	247.88	346.70	10400	10400	12900	16.5	35.5		
E85AAL	351.45	441.26	12800	12800	17200	22.2			

Guide

How to Order?

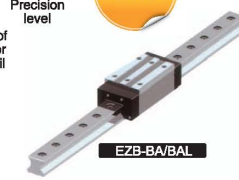
EZB -- 35 -- A -- A -- L -- T -- MM -- 2 -- 2 x 7000 -- (2) -- 4

Guide rail dimension Guide rail width Slider width Slider fix type Slider length Special requirement Seal type Slider Number Guide rail length Precision level

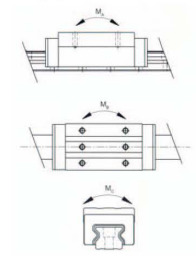
25-125mm A:Thread type
B:Lock type Blank:No special requirement
T: Special requirement MM,MN, MX,MY, MZ seals for choose Guide rail Number Number of stages for Guide rail

Blank:Standard type
L:Lengthen type

New



EZB-BA/BAL



Specifications

Model	Rated dynamic load		Rated static load		Rated torque			Slider weight kg	Guide rail weight kg/m
	C (KN)	C ₀ (KN)	M _A (N.m)	M _B (N.m)	M _C (N.m)	kg	kg/m		
E25BA	26.5	50.8	570	570	710	0.5	3.2		
E25BAL	33.8	71.6	830	830	980	0.7			
E35BA	50.5	121	1548	1548	2343	1.4	5.9		
E35BAL	61	162	2708	2708	3283	1.7			
E45BA	84.5	191	3156	3156	4858	2.48	9.8		
E45BAL	99.6	236	5560	5560	6736	3.2			
E55BA	123	292	5267	5267	8243	3.8	13.3		
E55BAL	154	390	9713	9713	11927	5.1			
E65BA	192	451	10823	10823	17762	6.3	20.3		
E65BAL	248	613	20808	20808	22957	8.9			
E85BAL	460	1050	45600	45600	51420	14.7	35.2		
E1005BAL	547	1330	61200	61200	73140	24.5	46.8		
E125BAL	1040	1924	123176	123176	114438	46	84.6		