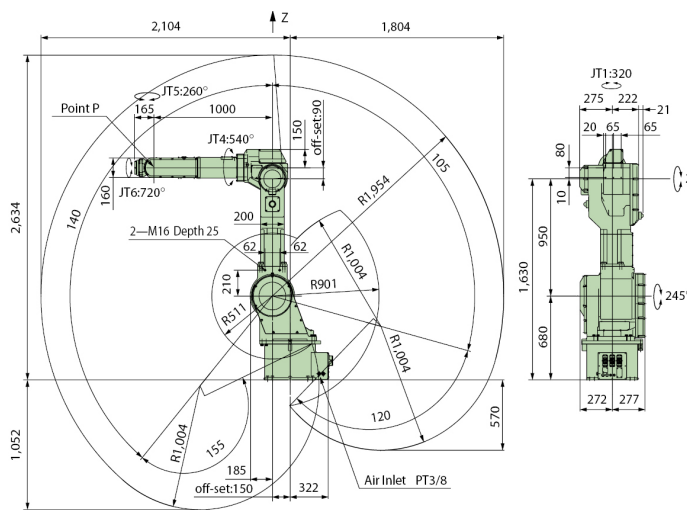




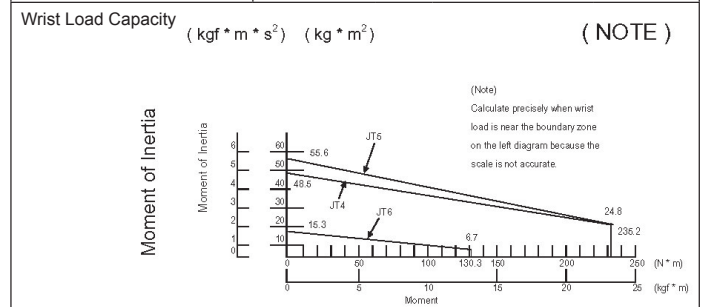
Standard Applications:

- Dispensing
- Sealing
- Assembly
- Inspection
- Material Handling
- Machine Tending
- Material Removal



Arm Type	Articulated		
Degrees of Freedom	6 (Optionally 7)		
Axes Work Envelope and Maximum Speed	Axis	Work Envelope	Maximum Speed
	Arm Rotation (JT1)	± 160°	160° /s
	Arm Out-In (JT2)	+140° ~ -105°	100° /s
	Arm Up-Down (JT3)	+120° ~ -155°	110° /s
	Wrist Swivel (JT4)	± 270°	180° /s
	Wrist Bend (JT5)	± 130°	175° /s
	Wrist Twist (JT6)	± 360°	260° /s
	Arm Traverse (JT7)	Standard 2000 mm	1000 mm/s

Position Repeatability	±0.15 mm (at center of tool mounting surface)
Payload	60 kg
Maximum Linear Speed	9000 mm/s (Maximum Linear Interpolation Speed: 1200 mm/s)



Driving Motor	Brushless AC Servomotor	
Mass	585 kg (excluding options)	
Color	Kawasaki Standard	
Installation	Floor and ceiling mount	
Ambient Temperature	0 – 45° C for manipulator	
Relative Humidity	35 – 85% non-condensing	
Pneumatic Piping	Built-in Pneumatic Piping	
Power/Signal Cable Length	7 m	
Built-in Circuit	Built-in Sensor Harness; 4 circuits, 24 VDC, GND Built-in Option Harness; 7 pairs	
IP Rating	Wrist-IP67; Arm-IP65	
Options	Power/Signal Cable Length: 10 m, 15 m	
	Installation	Wall Mount
	Protection	Dust Proof
	Built-in Valve	1D/2D/3D/1D1S/1D2S/2D1S/1S/2S/3S
	Installation Base	Robot Riser 600 mm, Robot Riser 300 mm, Base Plate
	Mechanical Stopper	JT1,2,3 adjustable (22.5 deg)
	Cover	Zeroing Surface Protect Cover

Consult us about Maintenance Parts and Spare Parts.